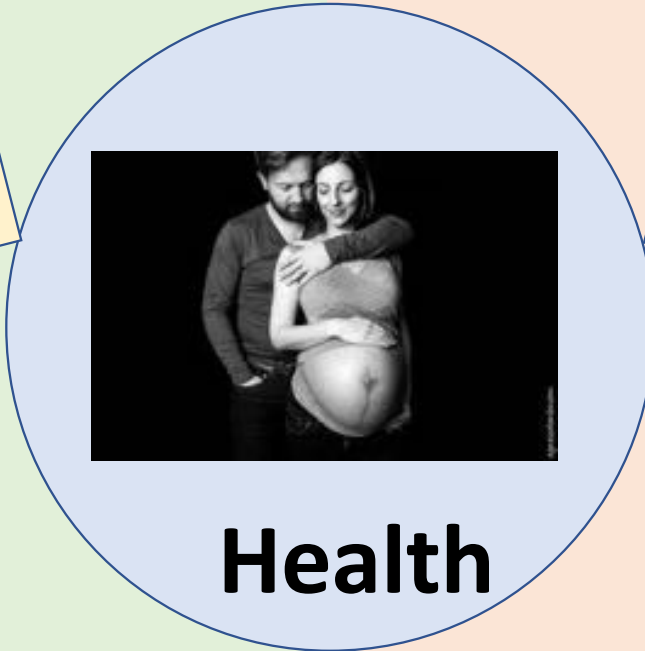
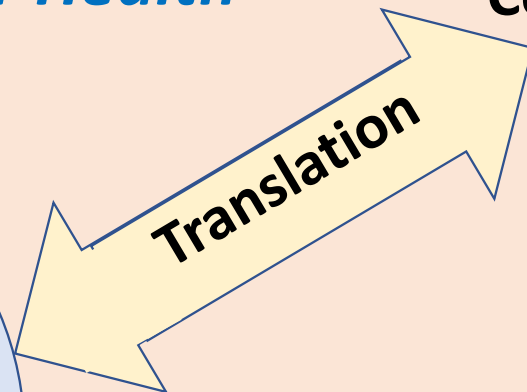
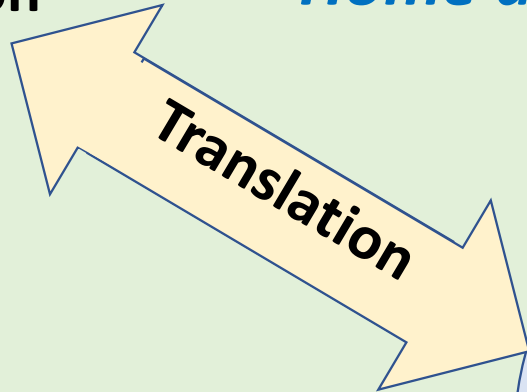




Innovation

Home as central location for Health a paradigm shift

Complexity



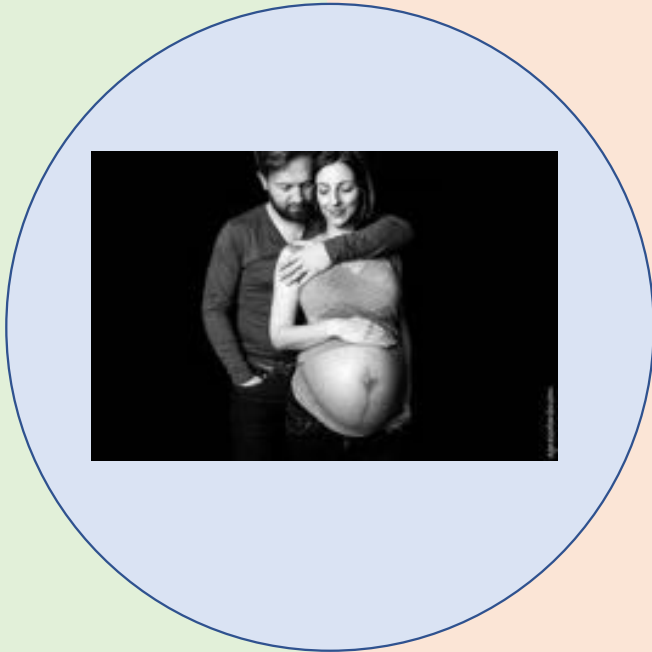
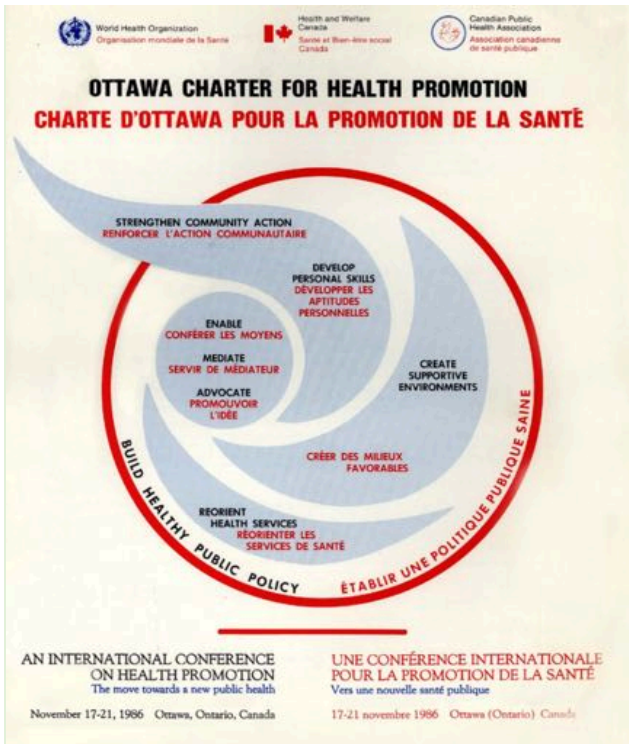
Philippe.Cinquin@univ-grenoble-alpes.fr

*Conflicts of interest :
Philippe Cinquin is co-founder of SentinHealth*



Grenoble INP





Baruch Spinoza
conatus... Ethique III, 6

Everything, as much as it can, strives to persevere in its being.

Health Issues

Health promotion is the process of enabling people to increase control over, and to improve, their health. To reach a state of complete physical, mental and social well-being, **an individual or group** must be able to **identify and to realize aspirations**, to **satisfy needs**, and to **change or cope with the environment**.

Acquired



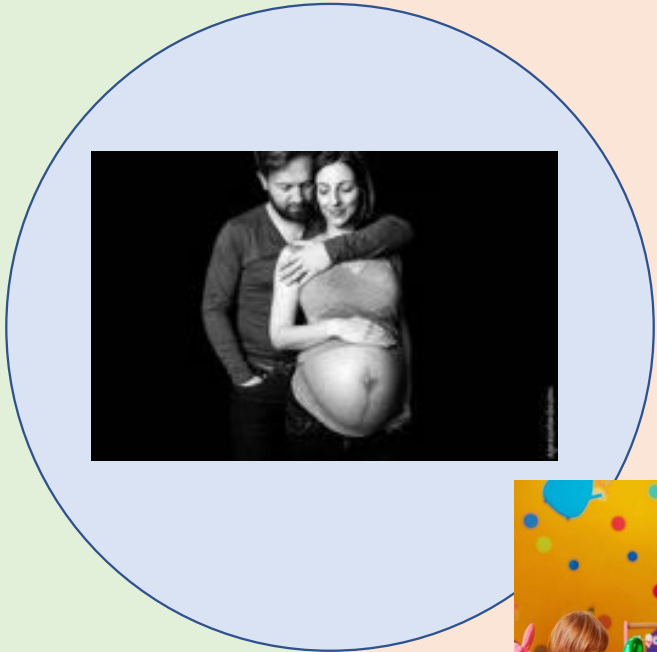
Metabolomics

Proteomics

Transcriptomics

Genomics

Innate



Health Issues



Microbiological factors



Environmental factors



Psycho-social factors

Grenoble hosts one of the 4 French *Interdisciplinary Institutes for Artificial Intelligence*

MIAI @ Grenoble Alpes (Head E. Gaussier)

MIAI
Multidisciplinary
Institute in
Artificial Intelligence



Deep Care: *Real life data* to empower patient!

T1 Empowerment by smart data capture in real life



ETISENSE Technologies



Instrumented Jackets:

- Deformable sensors integrated in tissue
- Already industrialized for animals
- On-going developments for human beings



Patented virtual flowmeter

- Respiratory and cardiac flows
- Validated at TIMC-IMAG
- On-going developments for human beings



Bluetooth acquisition platform:

- Multisensor electronics (accelerometer, ECG, ...)
- Integrated and evolutive platform
- Advanced AI for physiological parameters interpretation
- Distant and web-based Data Acquisition and Visualization

PRODUCT

Connected
Harness

Inertial Sensors

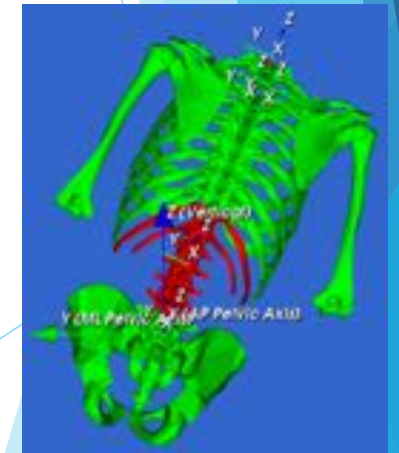


MySmartMove

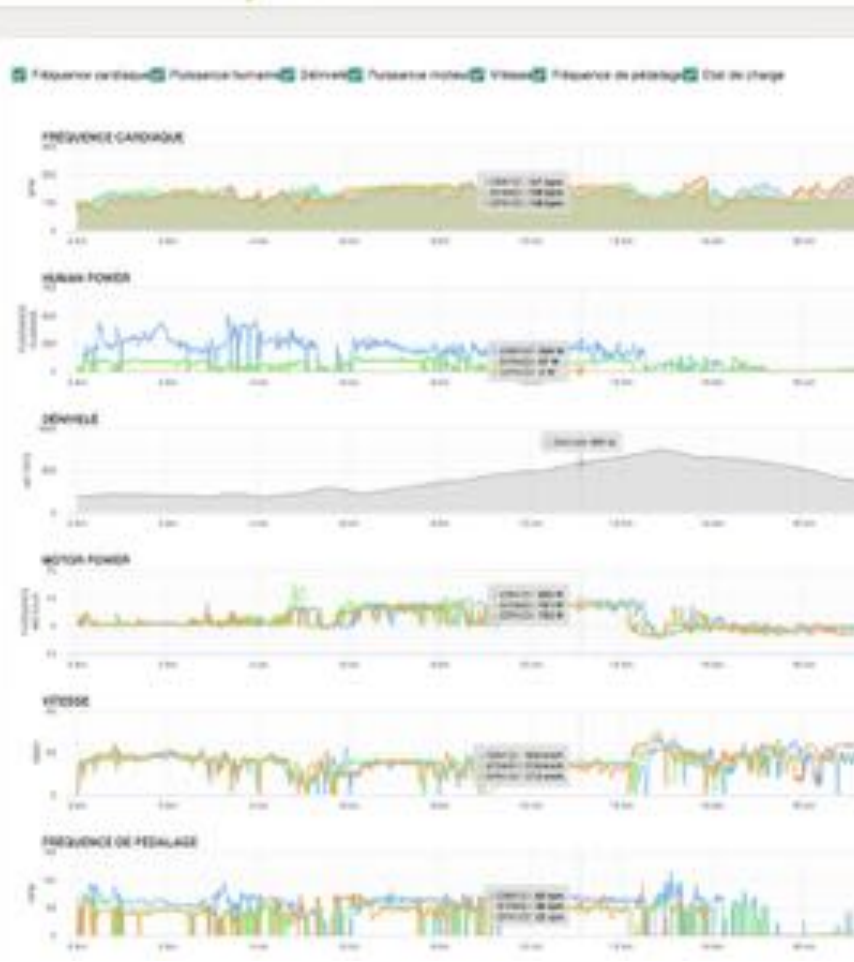
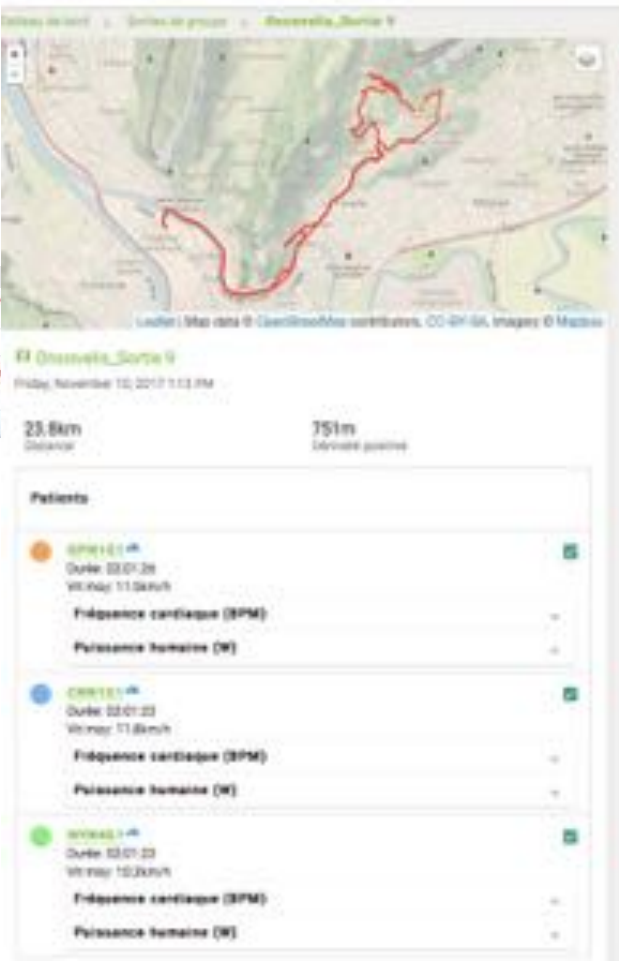
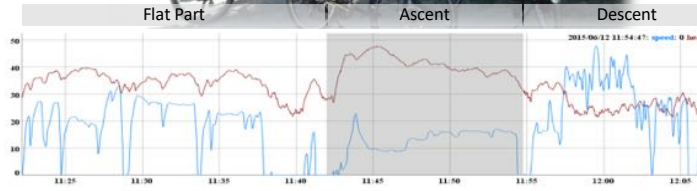
Data Processing
and Fusion



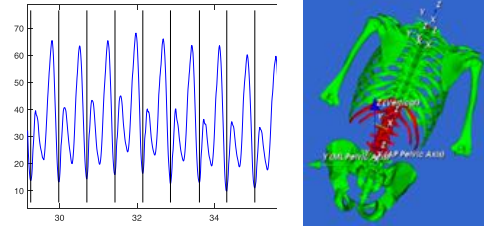
Digital tablet or
smartphone
applications



VELIS : Heart Rehabilitation in real life by connected bike and multimodal signal processing (ECG, body power, ...)



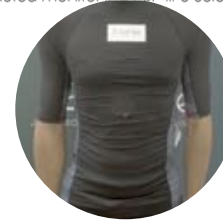
Integrating 3 Health Sensors in VELIS



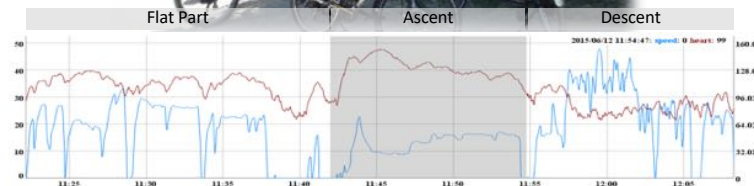
- Reconstruction of mean cycling, detection of activity (dancing, sitting, ...)
- Measuring and characterizing posture and movements of trunk



Jacketed monitoring for life sciences



- Functional Respiratory Monitoring
- Non-invasive measure of heart flow



- VELIS : Heart Rehabilitation in real life by connected bike and multimodal signal processing (ECG, body power, ...)



PARIS 2024



Microbiota

- One body
 - 10^{12} cells
 - 25 000 genes
 - Billions of bacteria
 - $3 \cdot 10^{13}$ to 10^{14} bacteria
 - 400 to 1200 \neq Bacteria
 - $3.3 \cdot 10^6$ genes
 - Virus
 - Fungi
 - Skin, mouth, vagina, placenta?, brain?, **gut**
- Its role
 - Digestion
 - Immunity maturation
 - Protection

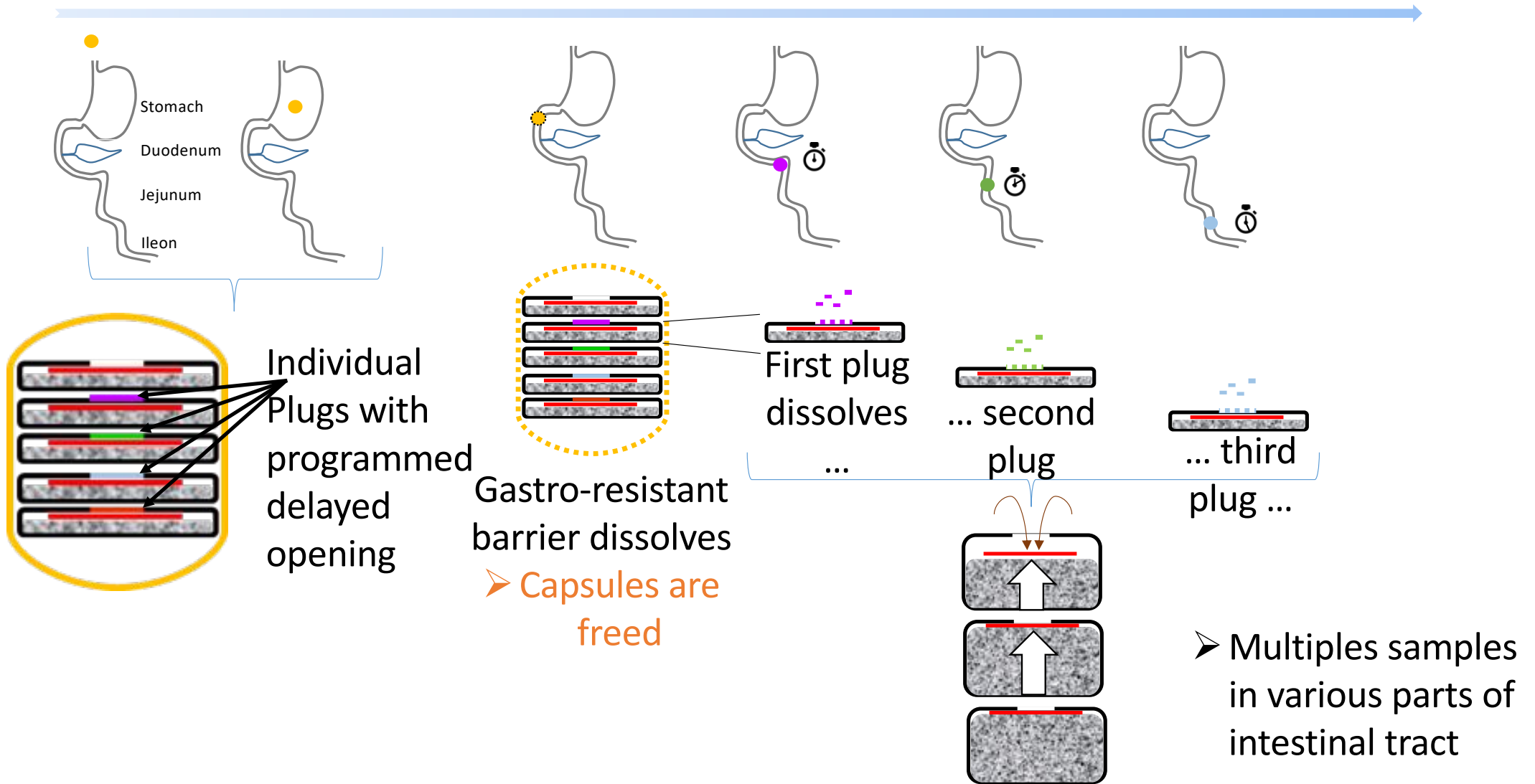
Microbiota



We are an holobiont

Holos Greek for whole
Biont: Organism

Multiple Sampling by a Swallowable Swelling Robot

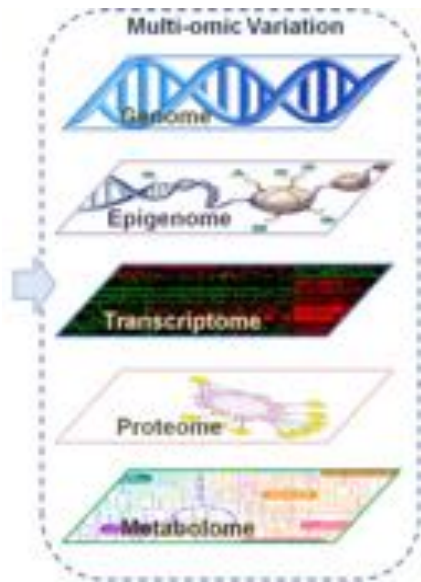


From sampling to intestomics-based personalized medicine

(proof of concept clinical trial scheduled Q1 2020, Pelican Health creation 2020)

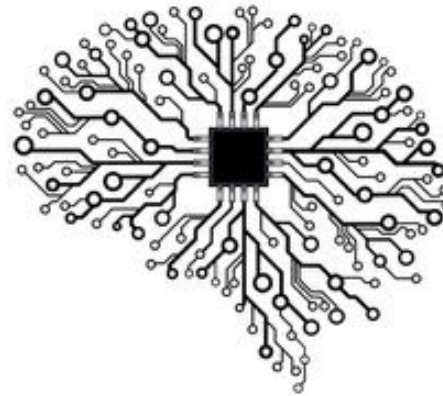
Sample analysis
Clinical data

...



Intestomic data analysis

A. I



1) Clinical Trials: Statistical characterization of intestomics heterogeneity in pathologies

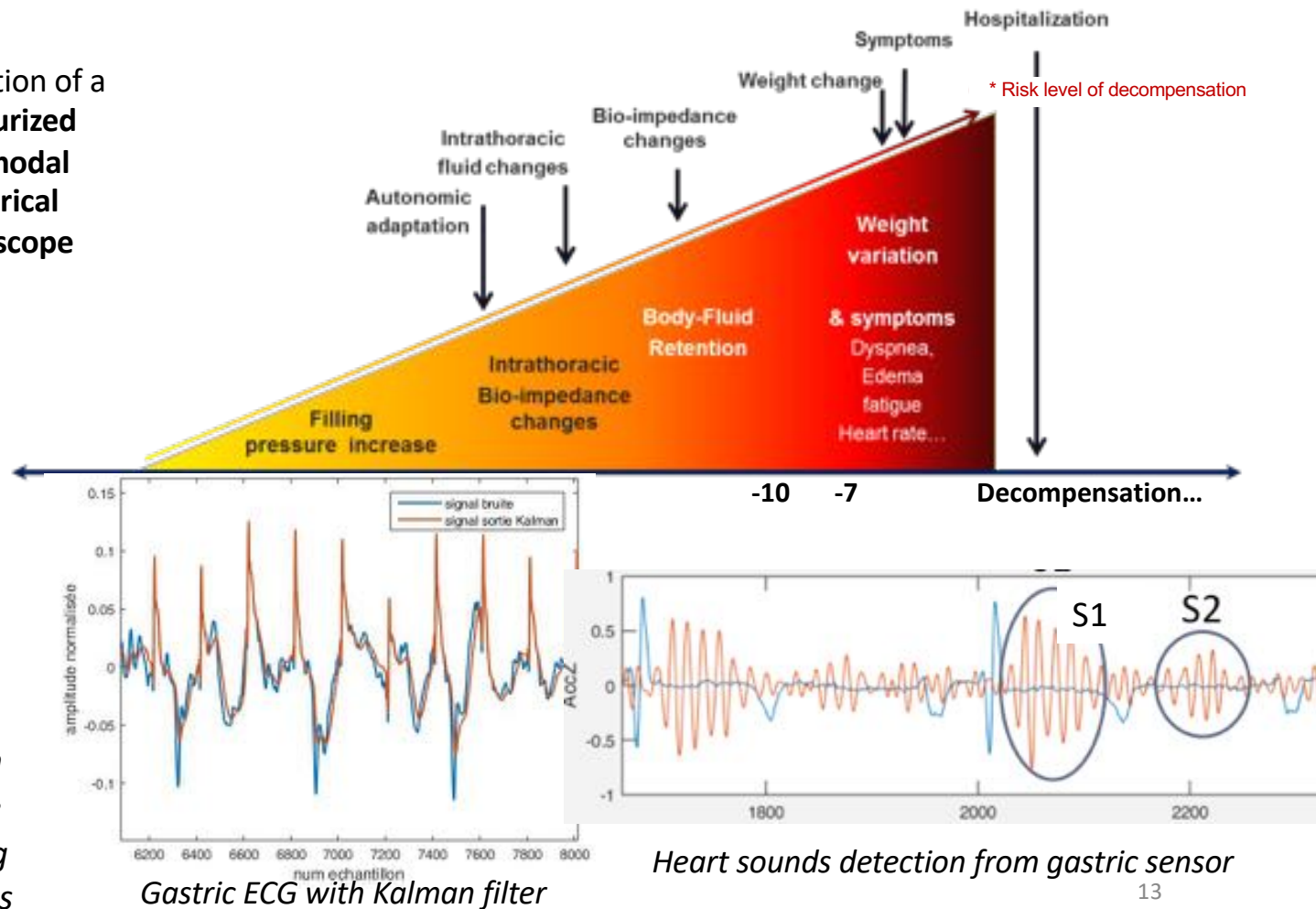
2) New patient: Deep-learning based estimation of probabilities of pathologies

Renew chronic diseases monitoring

The instance of early detection of Heart Failure relapses



Implantation of a **miniaturized multimodal numerical stethoscope**



sh
SENTINHEALTH is a French MedTech company specialized in integrated care solutions for monitoring and preventing exacerbations of major chronic diseases

Partners



SERENE-IoT Secured & Energy Efficient Healthcare solutions using IoT Technologies



Music: <https://www.bensound.com>

Secured & Energy Efficient Healthcare solutions using IoT Technologies

Ongoing Clinical Study : Flowchart of the patient

Inclusion visit :
Start of the study
for the patient.



Information about the protocol and signed consent during a consultation with the clinician

Installation of the connected pump at the patient home



Follow-up of the patient during 4 weeks



Clinical research assistant visits the patient once a week to change transmission modality.

Deinstallation of the connected pump :
End of the study
for the patient.

Questionnaire to the patient, to evaluate its interest on using of the connected pump



Deep Care

realize aspirations, satisfy needs, cope with environment



Health Issues :
Predict, Personalize
Prevent, Participate

Real life data to empower patient !

T1 Empowerment by smart data capture



T2 Empowerment by smart data fusion



Biomarkers

Participatory Health Project

T3 Empowerment by Health Institution Optimization



Serious game
 (antibiotic
 resistance)



Simulators
 Inversed Numerical Pedagogy

T4 Individual and Social adherence model

- Ethical issues
- Cost / benefit ratio perceived by the patient
- Mechanisms of acceptability
- Conditions of adherence and appropriation
- Influence of communication and technical design choices on acceptability, acceptance and adherence.

Deep Care : interdisciplinarity, openness

Communauté
UNIVERSITÉ Grenoble Alpes

Deep Care

TIMC >25 years "information = key to understand life and act on health"

AGEIS, CIC, GIN, GIPSA-LAB, LBFA, LETI, LRB, LIG, LJK, TIMA, VERIMAG

+ U. SHS (CERAG, GAEL GRESEC, LIP, PPL)

**+ several CHUGA Depts
+ ...**

+ very open (Patients Associations, Patients University, ...)

Confirmed ~800 k€/year



Labcoms



In'Test Medical



MIAI
Health Axis
Health Trajectories,
Multi-omics,
CAMI-Assistant,
Grenoble Health Data Hub
Other Axes



Public Health
Research
Clinical
Departments

Data Institute
Health
Technologies
Institute

National and International Partnerships

