

IMA s.r.o.

Your partner for smart demonstration of novel technology

LECS

Where innovators
meet & shape
OUR DIGITAL
FUTURE

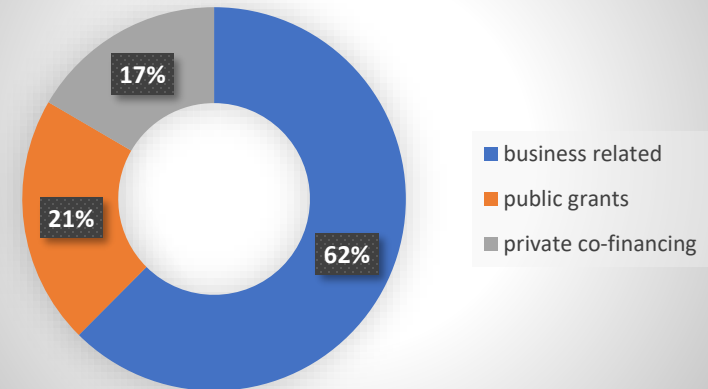
2019



IMA at a glance

- IMA is located in **Praha, Czech Republic**
- Number of employees:
85 / ~35 involved in R&I
- 2018 Sales > **5 M€**

IMA performance in 2018



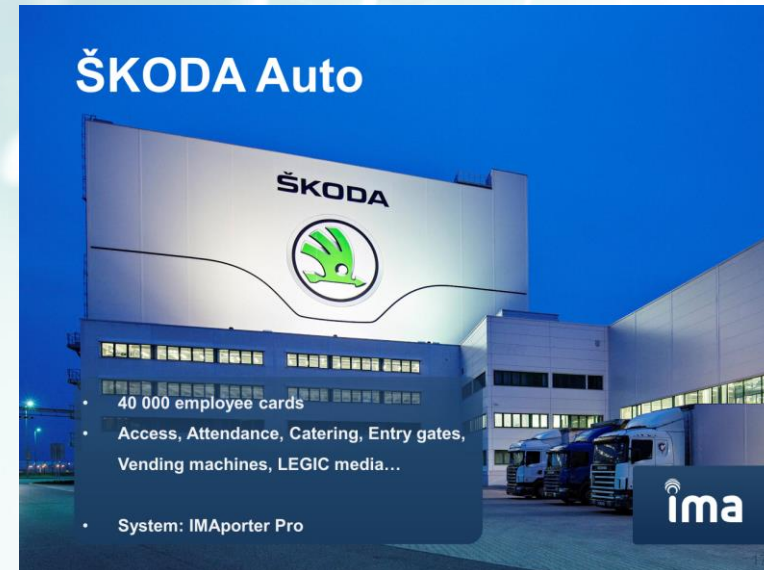
IMA at a glance

• Competences

- System integration, eID, RFID / NFC / BLE
- IoT -> sensors / data collection / LP WAN

• Products

- IMAPorter, RSW 05 reader
- Automotive HW / SW / AUTOSAR
- IMA LoRaWAN IoT data collector



IMA at a glance

- **Target applications and markets**
 - eID large systems integration
 - HW / SW on request
 - Task force for demonstration of novel technologies

Satisfied customers

ŠKODA



O₂



IMA's Activities

- **Experience with collaborative projects**
 - **CATRENE H2O, Eurostars SACON**
 - **ECSEL 3CCAR, Astonish, ESTABLISH, SILENSE, EnSO, R3-POWER UP, WInSiC4AP, Productive 4.0, WAKeMeUP, SECREDAS,**
 - **PENTA ESAIRQ**
 - **IMA was coordinator of ENIAC IDEAS** automotive related project
- **Interaction**
 - IMA is active member of AENEAS and ARTEMISIA
 - Visiting workshops / events

Collaboration Expectations

Collaborative project of interest to you	<i>ECSEL, H2020, Eureka clusters, Eurostars, bi-lateral CZ-Germany, CZ-Korea</i>
Scope	<i>technology demonstration and exploitation in practice</i>
Project idea	
Project impact	<i>IMA is able directly exploit project outcomes in praxice</i>
Project consortium	<i>searching for partner(s) preferably in domains: Access control / gateways for automotive, bitcoin based payment & blockchain</i>
<i>Other information (e.g. project budget, duration)</i>	



Tomáš Trpišovský, CEO

IMA s.r.o., Na Valentince 1, 150 00 Prague

Czech Republic

Tel.: (+ 420) 251 081 022

www.ima.cz

The ECS 2019 logo consists of a stylized 'E' icon made of three horizontal bars, followed by the text 'ECS 2019' in a bold, blue, sans-serif font.

Where innovators
meet & shape OUR DIGITAL FUTURE